



scifest

RANDOLPH COLLEGE 2025

All events are free and open to the public. Events requiring pre-registration are noted. Free t-shirts, refreshments, prizes, and more... For more information visit: randolphscience.org or email: scifest@randolphcollege.edu



FRIDAY, MARCH 14

PI RUN

6 p.m. | Main Hall (front campus)
Free and open to the public. | Registration required and limited to the first 300, please register at bit.ly/pirun25 starting Jan. 15, 2025.



THURSDAY, MARCH 27

KEYNOTE SPEAKER: DR. MOO COOPER AND SCIFEST STAR AWARD

Dr. Cooper is a NASA Planetary Protection Engineer
7:30p.m. | Smith Hall Theatre | Smith Hall
Free and open to the public. | No tickets required.



FRIDAY, MARCH 28

CENTER FOR STUDENT RESEARCH OPEN HOUSE

3-4 p.m. | Main 137
Visit to see examples of student research and internship experiences from the Career Development Center.

WOMEN IN SCIENCE PANEL

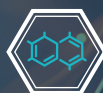
4-5 p.m. | Nichols Theatre | Student Center
5-5:45 p.m. Reception | Hampson Commons

POETRY JAM! READING AND COMPETITION AWARDS

6-7:30 p.m. | Thoreson Theatre | Leggett Building
K-college students should submit poetry at randolphscience.org/scifest-poetry-jam/

A SCIENTIST GOES TO THE MOVIES: TWISTERS

7:30-10 p.m. | Thoreson Theatre | Leggett Building
A scientist will show the full length movie with brief commentary on the validity of the science.



SATURDAY, MARCH 29

SCIENCE DAY FUN FOR LITTLE SCIENTISTS

12 p.m. | 1 p.m. | 2 p.m. | 3 p.m. | Choose one hour Randolph College Nursery School. Ages: 3-7 years old. Requires pre-registration starting Jan. 15, 2025.
Visit: www.randolphscience.org

SCIENCE DAY FOR 3RD-6TH GRADE

11:45 a.m.-4:30 p.m. | Michels Athletic Center
Requires pre-registration starting Jan. 15, 2025
Visit: www.randolphscience.org

GLOWSTICK STAR PARTY

8:30-9:30 p.m. | Winfree Observatory



SUNDAY, MARCH 30

MAKER FAIRE LYNCHBURG:

11a.m.-4 p.m. | Main Hall | Randolph College
More than 50 hands-on activities across campus for all ages 2-100
Brought to you by Lynchburg's maker space, Vector Space. For more info, visit: Lynchburg.makerfaire.com

LYNCHBURG REGIONAL KIDWIND CHALLENGE

10a.m.-4 p.m. | Houston Memorial Chapel

SMASH @ SCIFEST

11 a.m. | Alice's eCade
Welcome gamers of all levels to a round robin mini-tournament! To register to compete, visit randolphscience.org

FIRST LEGO LEAGUE EXPLORE EXPO

12:30-4:30 p.m. | Smith Building
1- 2 p.m. Lego projects on display for public viewing
4 p.m. Awards ceremony in Smith Hall Theatre

