



scifest

RANDOLPH COLLEGE 2025

All events are free and open to the public. Events requiring pre-registration are noted. Free t-shirts, refreshments, prizes, and more... For more information visit: randolphscience.org or email: scifest@randolphcollege.edu



FRIDAY, MARCH 14

PI RUN

6 p.m. | Main Hall (front campus)
Free and open to the public. | Registration required and limited to the first 300, please register at bit.ly/pirun25 starting Jan. 15, 2025.



THURSDAY, MARCH 27

BWXT KEYNOTE SPEAKER: DR. MOOGEA COOPER AND FRAMATOME SCIFEST STAR AWARD

Dr. Cooper is a NASA Planetary Protection Engineer
7:30p.m. | Smith Hall Theatre | Smith Hall
Free and open to the public. | No tickets required.



FRIDAY, MARCH 28

CENTER FOR STUDENT RESEARCH OPEN HOUSE

3-4 p.m. | Main 137
Visit to see examples of student research.

FRAMATOME WOMEN IN SCIENCE PANEL

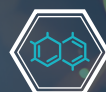
4-5 p.m. | Nichols Theatre | Student Center
5-5:45 p.m. Reception | Hampson Commons

POETRY JAM! READING AND COMPETITION AWARDS

6-7:30 p.m. | Thoreson Theatre | Leggett Building
K-college students should submit poetry at
randolphscience.org/scifest-poetry-jam/

UNITED BANK A SCIENTIST GOES TO THE MOVIES: TWISTERS

7:30-10 p.m. | Thoreson Theatre | Leggett Building
Professor and Chair of Environmental Studies and
Science Karin Warren will show the full length movie
with brief commentary on the validity of the science
from Meteorologist George Flickinger.



SATURDAY, MARCH 29

SCIENCE DAY FUN FOR LITTLE SCIENTISTS

12 p.m. | 1 p.m. | 2 p.m. | 3 p.m. | Choose one hour
Randolph College Nursery School. Ages: 3-7 years
old. Requires pre-registration starting Jan. 15, 2025.
Visit: www.randolphscience.org

SCIENCE DAY FOR 3RD-6TH GRADE

11:45 a.m.-4:30 p.m. | Michels Athletic Center
Requires pre-registration starting Jan. 15, 2025
Visit: www.randolphscience.org

GLOWSTICK STAR PARTY

8:30-9:30 p.m. | Winfree Observatory



SUNDAY, MARCH 30

MAKER FAIRE LYNCHBURG:

11a.m.-4 p.m. | Main Hall | Randolph College
**More than 50 hands-on activities
across campus for all ages 2-100**
Brought to you by Lynchburg's maker space, Vector
Space. For more info, visit: Lynchburg.makerfaire.com

LYNCHBURG REGIONAL KIDWIND CHALLENGE

10a.m.-4 p.m. | Michels Athletic Center (MAC)

SMASH @ SCIFEST

11 a.m. | Alice's eCade
Welcome gamers of all levels to a round robin
mini-tournament! To register to compete, visit
randolphscience.org

FIRST LEGO LEAGUE EXPLORE EXPO

12:30-4:30 p.m. | Smith Building
12:30- 1:30 p.m. Lego projects on display for viewing
4 p.m. Awards ceremony in Smith Hall Theatre

